



2020 MOUNTAIN BIKE MARATHON
WORLD CHAMPIONSHIPS

SAKARYA
TURKEY



COVID-19 PROCEDURES

Table of Contents

Transportation

Airport	1-2
Information Desk at the Airports	3
Accommodation	4
Transport	5

Competition Area

General Measures	6
Bubbles	7
Finish Area	8-9
Media and Team Area	10
Recommendations	11

Communication and Information Channels

Covid-19 Communication and Information Channels	12
---	----



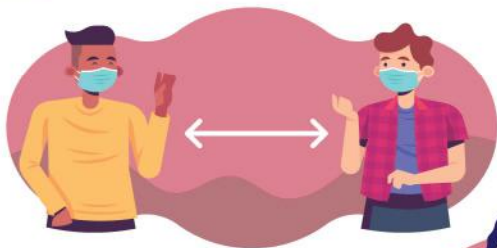
Fever of all passengers is measured using thermal cameras inside the airport terminal.

Easy access to hand disinfectants is possible at every point of the airport.

It is important to follow the *social distance* rules.

Information Desk at the Airports

2



It is important to follow the **social distance** rules and **wear a mask**.



On your arrival at the information desk, you will be provided with a **health kit**, including face masks and disinfectant solution.



Teams without a transportation arrangement will be **directed to shuttle busses** that will transfer them to Sakarya.



Teams will be provided with a vehicle on their request to transfer them from the airport to Sakarya and they will be able to arrange a vehicle for their teams in the city. Teams without a transportation arrangement shall ***comply with the public transport rules*** during their travels in the city from the hotel to the event area and back.

It is compulsory ***to wear a mask and keep social distance in public transportation***. It is also compulsory for the teams that travel in their private vehicles provided by the official agency.



Accommodation

4



All hotel employees shall undergo *regular health checks*.

Social distancing rules are applied in all areas of the hotels. Guests should get their temperature measured every time they arrive at the hotel.



Public areas in the hotel are *regularly disinfected*, and disinfectant solutions are available at the entrances. Frequent contact areas in the rooms (*remote controls, light switches, door handles, etc*) are regularly cleaned with disinfectant solutions. Ventilations, air conditioning systems, washing machines and dishwashers are regularly disinfected.





Transfer from the airports to Sakarya will be provided by shuttle buses for teams without a vehicle arrangement.

When getting on the shuttle buses, your body temperature will be measured using a non-contact thermometer.

The shuttle buses will be disinfected for your safety before you arrive. During your travel from the airport to Sakarya, you must keep social distance and wear your mask.



PCR or any kind of COVID-19 test is **NOT** compulsory but recommended for riders, national federation staff , UCI staff, media members, UCI commissaires, anti-doping team and timing staff.



Face masks/ coverings shall always be worn, with the exception of riders on the track (*during training or the race*). It is requested to keep social distance of minimum 1,5 metre.

Accreditation of any person inside the event venue without a mask for an extended period of time will be cancelled.

Regular hand washing/sanitation is expected. Hand sanitizers will be provided at multiple locations on the event area.

Bubbles are a group who can mix together but who cannot mix with another bubble.
They are identified as follows:

1. Team – for the purpose of this document all athletes, National Federation and registered UCI-Team staff who are accredited to the event are referred to as “Team”

> We recommend each team forms their own bubble.



2. Media

3. UCI

> UCI staff will be divided into smaller function based bubbles.

4. TV

> TV staff will be divided into smaller functional bubbles to keep social distance.

Start boxes

- > Limited members of media will be allowed in start boxes.
- > Commissaires will remain at entrance of the boxes wherever possible.

Start

- > A reduced number of media will be allowed.
- > Team staff should stay in the B-zone area set up before the start arch to collect clothing, bottles etc.

Feed and Technical Assistance Area

- > Only team staff with a feed zone pass can enter the area.
- > Masks/face covering must be worn at all times.
- > Commissaires shall keep their distance from the teams as much as possible.
- > Shimano shall keep their distance from the teams where possible.

Finish

- > A reduced number of media will be allowed.
- > Only 1 TV cameraman will be present.
- > A minimum number of key UCI/LOC staff will be present.



Podium

- > Podium steps will be placed according to social distance rules.
- > Only 1 LOC official will be allowed on stage but without contact with riders.
- > Only key UCI/LOC staff, 1 cameraman, the UCI speaker will be allowed behind the podium
- > Presentation of flowers and trophies will be on the podium steps. Because of COVID-19, popping up champagne will not be held.



Media

Team videographers/TVO are considered to take part in the Team Bubble, NOT in the Media bubble.

- > No access for TVO to the media centre/media areas at the finish
- > TVO will be required to sign the usual waiver in order to receive a Team black bib
- > Under no circumstances are Media allowed to access the team area.

Team Area

- > Only riders and team staff are allowed in the team area.
- > No member of media will be allowed in the team area.

Recommendations for Federations & Teams

- > Create and adhere to your own team bubble. Minimise contact with other bubbles wherever possible.
- > With the exception of your team videographers, no members of media will be allowed in your team bubble and area.

Recommendations for Athletes

- > Avoid signing autographs and taking selfies with fans.
- > Wear a mask except when you are on the track.
- > Riders shall wear their masks until they are called for race start.
- > Accept media interviews only if the interviewer keeps social distance and takes appropriate hygiene measures.



Covid-19 Communication and Information Channels

12



E-Mail us:

info@sakarya2020.org



Address:

15 Temmuz Camili mah. Adapazarı / Sakarya / TÜRKİYE



Find us on social media

